



OC Streetcar

Special Needs Advisory Committee

July 26, 2016

OC Streetcar?



- A streetcar system that connects Santa Ana and Garden Grove
- 4.1 miles – from the Santa Ana train station, through downtown Santa Ana, to Harbor/Westminster
- Connects Metrolink and Amtrak with the busy Harbor (43/543) and Westminster (60/560) bus routes
- It provides 10 station stops in each direction
- Runs in traffic lanes through Santa Ana to Raitt Street, then runs in the Pacific Electric right-of-way to Harbor

Streetcar - Stops



Modern Streetcar

- Single vehicle, articulated for tight turns
- Operates in traffic lane with traffic
- Track is flush with traffic lane
- 100% electric

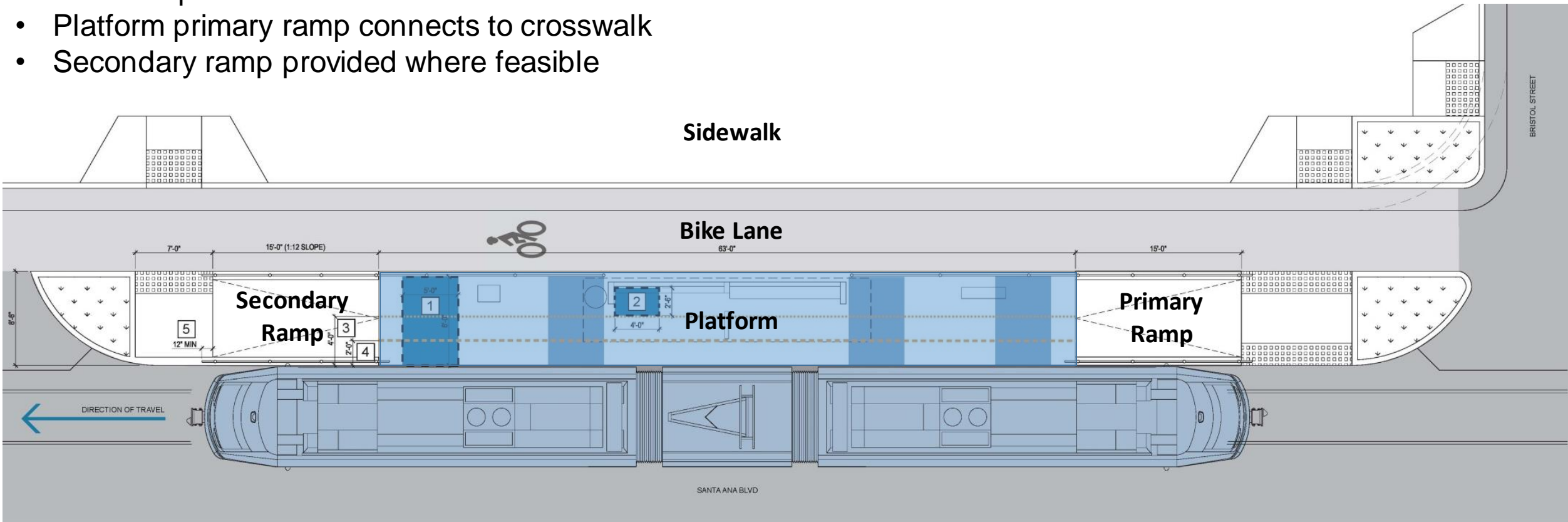


- Low-floor vehicles with fully-level boarding



Access

- Curb ramps at corners
- Platform primary ramp connects to crosswalk
- Secondary ramp provided where feasible



Access to the Stop

- Curb ramps at corners
- Platform ramp connects to crosswalk
- Secondary ramp provided where feasible



Stop Design – Key Objectives



- Accessibility
- Safe/Secure/Maintainable
- Budget Conscious
- Develop System-wide Design Continuity
- Identifiable Branding
- Incorporate Community Influences - “Personalization”
- Community/Stakeholder Consensus
- Optimal Functionality

Design Process

Phase One (now – end of August 2016)

- Information Gathering
 - Stakeholder Meeting
 - Community Meetings #1 and Outreach

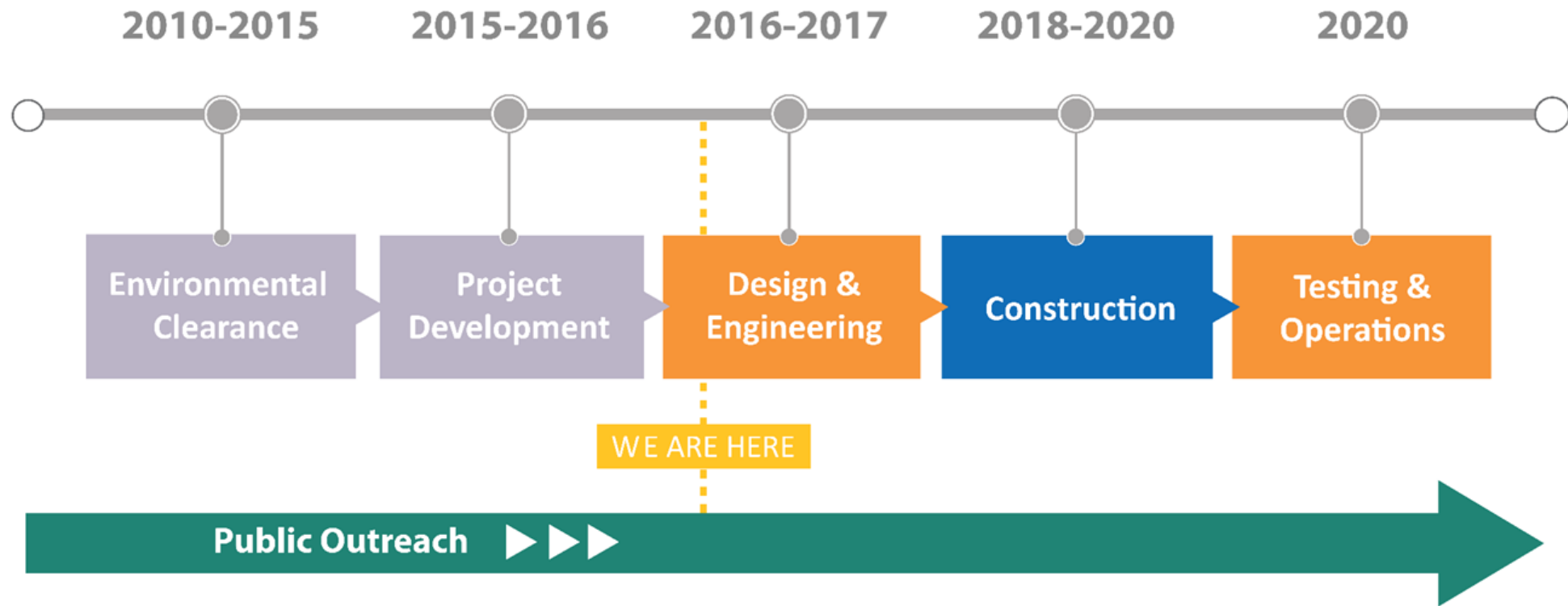
Phase Two – Design (September – December 2016)

- Follow-up Stakeholder Meetings
- Develop Concept(s)
- Refine Preferred Concept(s)
- Community Meetings #2 and Outreach
- City Council Presentations
- Complete Design Documentation

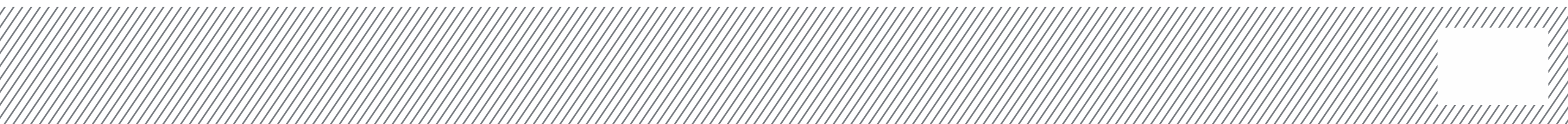
Phase Three – Final Outreach (January 2017)



Schedule & Next Steps



Questions?





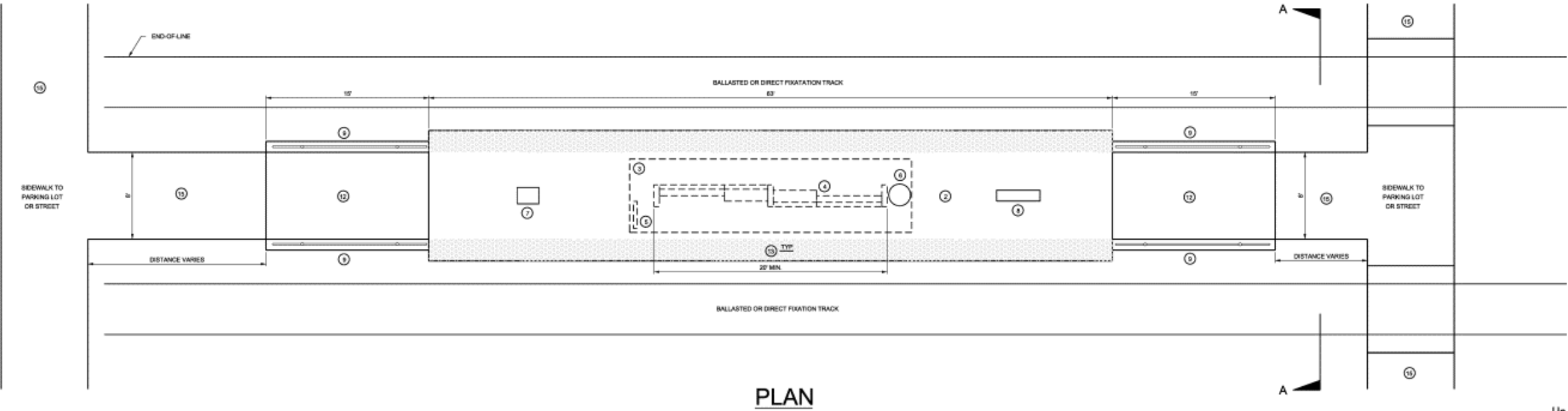
East Terminus at SARTC



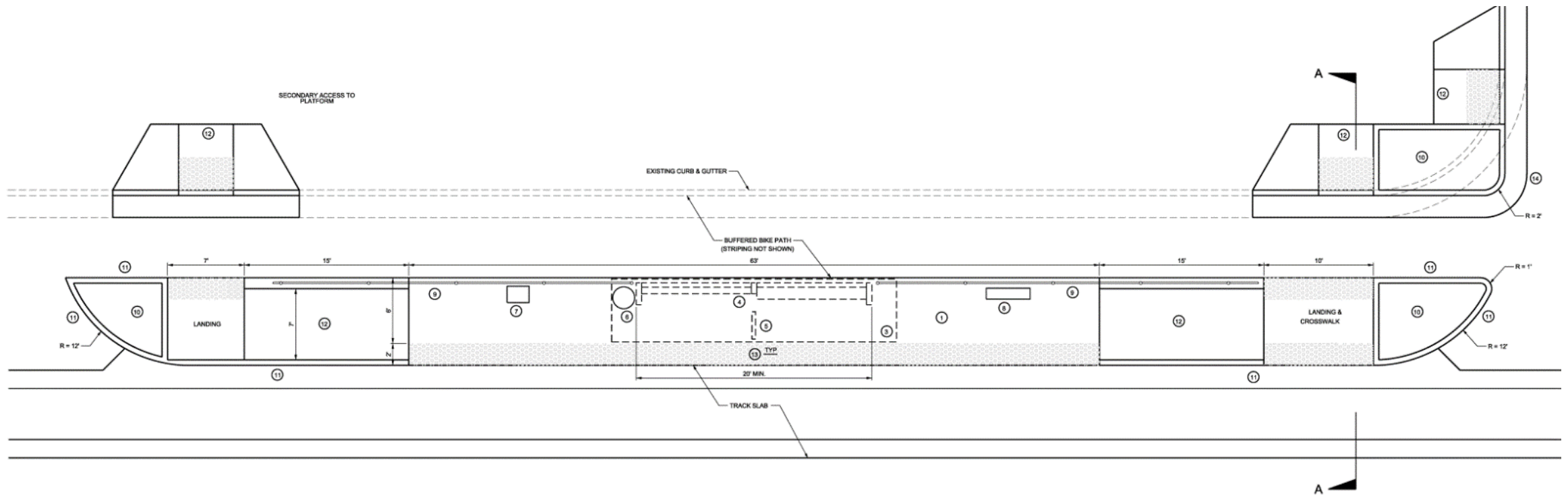
West Terminus at Harbor/Westminster



Center Platform



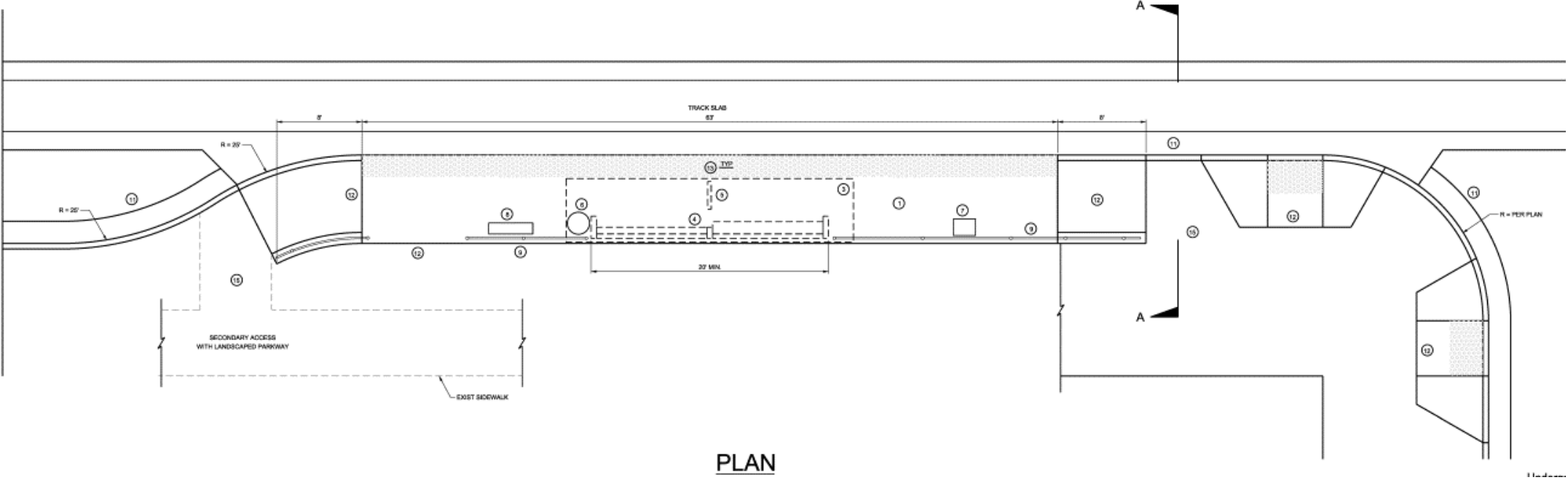
Side Platform with Bike Lane



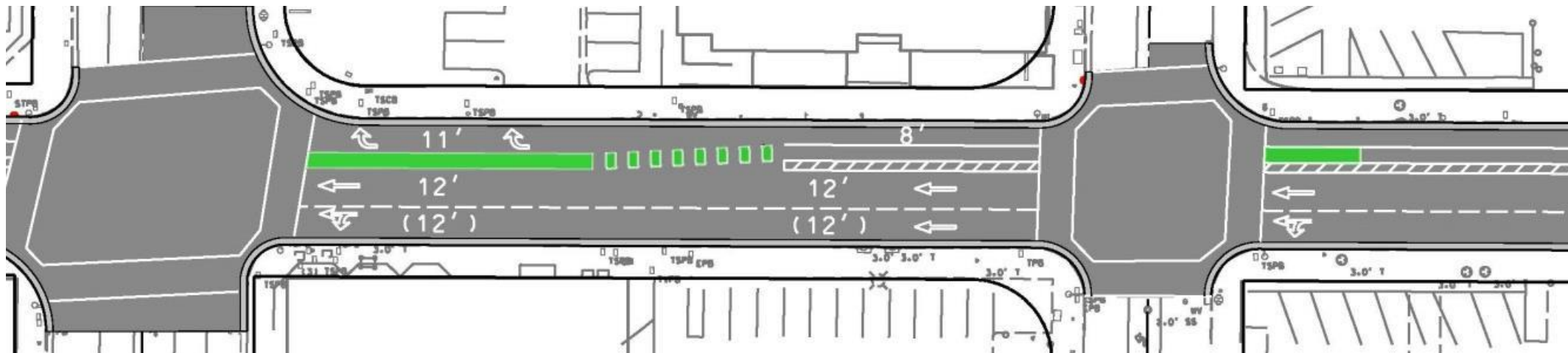
PLAN

Unc

Side Platform Sidewalk Extension



Santa Ana Blvd from French to Ross



Santa Ana Blvd from Flower to Raitt

